

Albums de timbres en PDF

Cet album a été téléchargé gratuitement sur

<http://tim.mond.free.fr/>

Il est gratuit

Si vous l'avez acheté demandez à vous faire rembourser



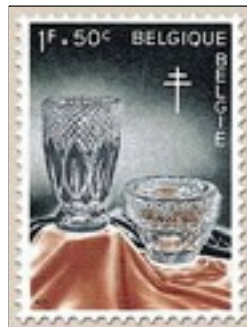
# BELGIUM

## SEMI-POSTAL STAMPS

Refugees from Congo  
1960



Belgian Handicrafts  
1960



# BELGIUM

Lion Rampant  
Inscribed "Belgique-Belgie"  
1944



# BELGIUM

Lion Rampant  
Inscribed "Belgie-Belgique"  
1944



## BELGIUM

Leopold III, Crown and V

Perforated 14 x 13 1/2

1944



Perforated 11 1/2

1957



Leopold III Without Crown and V; Type of 1936-51

Perforated 11 1/2

1956



# BELGIUM

Coat of Arms Stamps of 1935-41 Surcharged in Red  
1944



Leopold III Stamps Surcharged  
1946



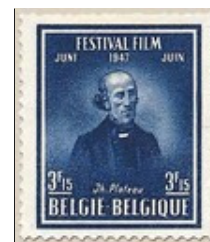
Centenary of Ostend - Dover Steamship Line  
1946



Captain de Gerlache's Antarctic Expedition  
1947



Joseph A. F. Plateau  
1947



# BELGIUM

Industries

1948



# BELGIUM

Leopold I  
1949



Stamps of 1935-45 Precancelled and Surcharged  
1949



St. Mary Magdalene  
1949



75th Anniversary of the UPU  
1949



Pension Fund  
1950



Lion Rampant  
1951





# BELGIUM

Lion Rampant

1951-75

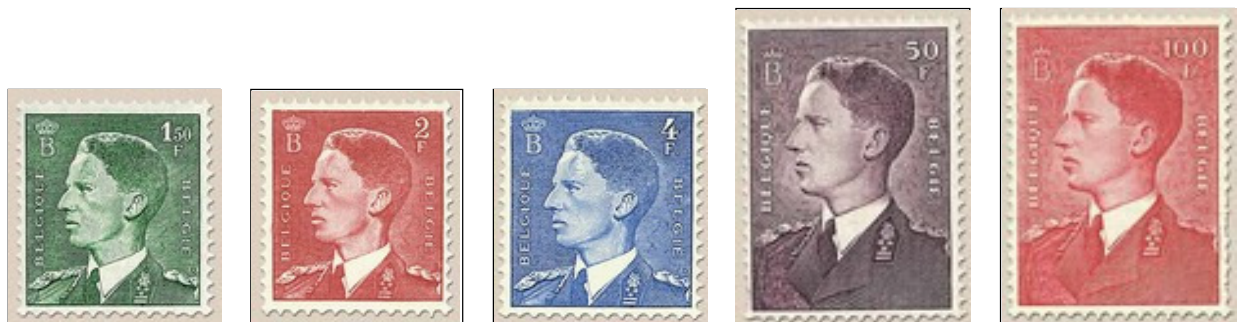


# BELGIUM

Portraits - 13th UPU Congress  
1952



King Baudouin  
1952-58



# BELGIUM

King Baudouin  
1953-66



# BELGIUM

King Baudouin Type Redrawn  
1969-72



Shorter Format; Strong White Halo Around Head  
1971



## BELGIUM

Lion Rampant Stamps Precancelled and Surcharged  
1954



Rotary International Conference  
1954



Ghent International Flower Exhibition  
1955



Charles V Exhibition  
1955



# BELGIUM

Emile Verhaeren  
1955



Textile Exhibition  
1955



Sculpture Exhibition  
1955



"Departure of Volunteers from Liège, 1830"  
1955



Blood Donor Service  
1956



Scheldt Exhibition  
1956



Europa  
1956



Edouard Anseele  
1956



Railroad Electrification  
1956



Brussels World's Fair  
1957-58



# BELGIUM

Emperor Maximilian I  
Receiving Letter  
1957



Sabena Helicopter Service  
1957



Zeebrugge Harbor  
1957



Arrival of King Leopold I in Belgium  
1957



Birth of Lord Baden-Powell  
1957



Sculpture Exposition  
1957



Europa  
1957



Schools of Nursing  
1957



Postal Museum Day  
1958



Eugene Ysaye  
1958



# BELGIUM

United Nations Issue  
1958



Europa  
1958

Declaration of Human Rights  
1958

Stamp Day  
1959





# BELGIUM

NATO  
1959



City Hall, Audenarde  
1959



Pope Adrian VI  
1959

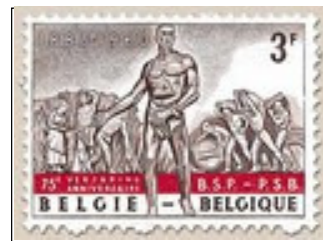


Europa  
1959



Socialist Party of Belgium  
1960

Boeing 707  
1959



# BELGIUM

Countess of Taxis  
1960



Ghent International Flower Exhibition  
1960



Congo Independence  
1960



# BELGIUM

Europa  
1960



Stamp Collecting Among Children  
1960



Centenary of Communal Credit Society  
1960



King Baudouin and Queen Fabiola  
1960



# BELGIUM

## SEMI-POSTAL STAMPS

Coats of Arms  
1941

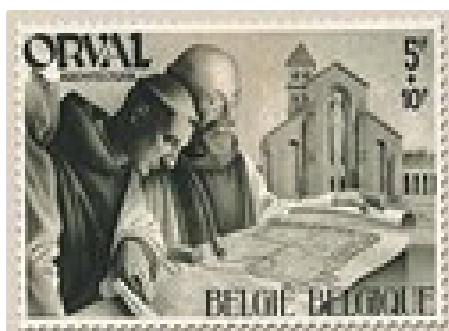
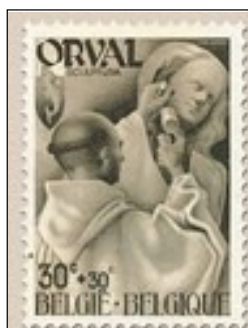


# BELGIUM

## SEMI-POSTAL STAMPS

Orval Abbey

1941



# BELGIUM

## SEMI-POSTAL STAMPS

Portraits  
1941-42



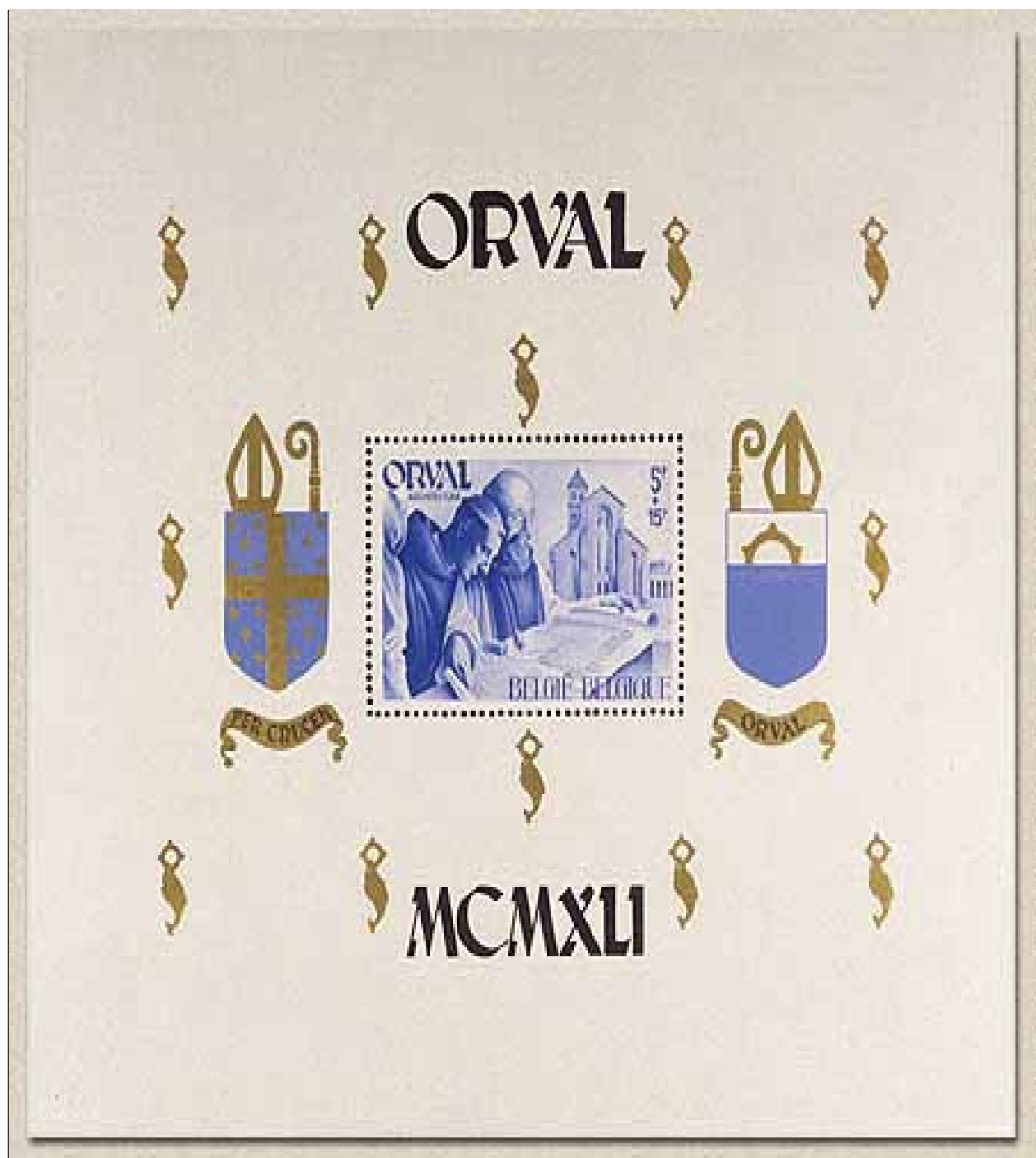
Archduke Albert and Archduchess Isabella  
1942



BELGIUM

SEMI-POSTAL STAMPS

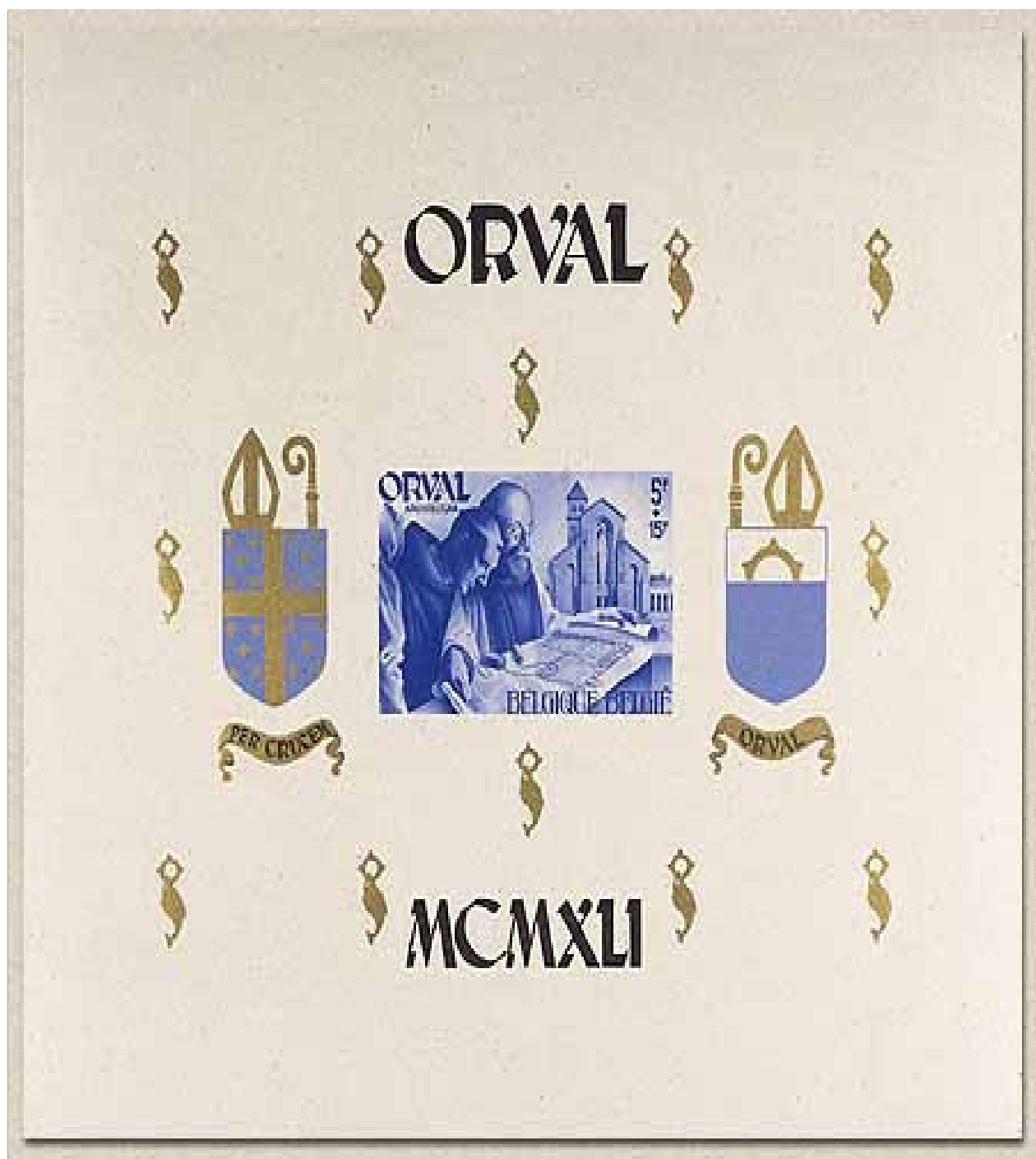
Orval Abbey  
Inscribed "Belgie-Belgique"  
1941



BELGIUM

SEMI-POSTAL STAMPS

Orval Abbey  
Inscribed "Belgique-Belgie"  
1941





# BELGIUM

## SEMI-POSTAL STAMPS

Statues of St. Martin

1941-42



# BELGIUM

## SEMI-POSTAL STAMPS

Statue of St. Martin  
Inscribed "Belgie-Belgique"  
1942



# BELGIUM

## SEMI-POSTAL STAMPS

Statue of St. Martin  
Inscribed "Belgique-Belgie"  
1942



BELGIUM

SEMI-POSTAL STAMPS

Queen Elisabeth Music Foundation

Inscribed "Belgie-Belgique"

1941

*Muziekkapel van de Koningin Elisabeth*



*Chapelle Musicale de la Reine Elisabeth*

BELGIUM

SEMI-POSTAL STAMPS

Queen Elisabeth Music Foundation

Inscribed "Belgique-Belgie"

1941

*Chapelle Musicale de la Reine Elisabeth*



*Muziekkapel van de Koningin Elisabeth*

BELGIUM  
SEMI-POSTAL STAMPS

Portraits  
1942



Belgian Prisoner  
1942



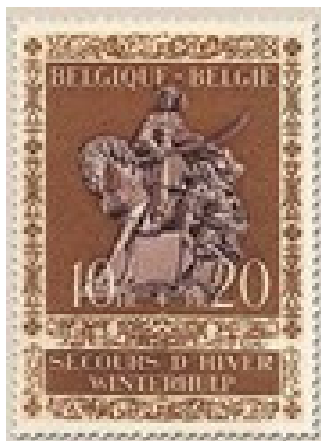
Prisoners of War  
1943



# BELGIUM

## SEMI-POSTAL STAMPS

Statues of St. Martin  
1942-43



# BELGIUM

## SEMI-POSTAL STAMPS

Statues in Petit Sablon Park  
1943



Orval Abbey  
1943





# BELGIUM

## SEMI-POSTAL STAMPS

Winter Relief

1943-44



# BELGIUM

## SEMI-POSTAL STAMPS

Red Cross

1944



Prisoners of War

1944



# BELGIUM

## SEMI-POSTAL STAMPS

Control of Tuberculosis

1944



Postal Employees Relief Fund

1945



# BELGIUM

## SEMI-POSTAL STAMPS

Prisoners of War, Displaced Persons,  
Families of War Victims and Members of the Resistance Movement  
1945



# BELGIUM

## SEMI-POSTAL STAMPS

Arms of Provinces  
1945



Erection of Museum in Louvain  
1946



Erection of a "House of Fine Arts" at Namur  
1946



# BELGIUM

## SEMI-POSTAL STAMPS

Emile Vandervelde Institute  
1946



## Portraits 1946



# BELGIUM

## SEMI-POSTAL STAMPS

### Coats of Arms 1946



### Portraits 1947



BELGIUM  
SEMI-POSTAL STAMPS

Coats of Arms  
1947



Abbey of the Trappist Fathers at Achel  
1948



Basilica of the Carmelite Fathers of Chevreumont  
1948





# BELGIUM

## SEMI-POSTAL STAMPS

Edouard Anseele  
1948



Erection of Monuments at Antwerp and Liege  
1948



# BELGIUM

## SEMI-POSTAL STAMPS

### Double Barred Cross and Portraits 1948



### Flora and Portraits 1949



# BELGIUM

## SEMI-POSTAL STAMPS

Rogier van der Weyden Paintings  
1949



Jordaens Paintings  
1949



# BELGIUM

## SEMI-POSTAL STAMPS

6th Anniversary of Liberation by British Army  
1950

Guido Gezelle  
1949



European Athletic Games  
1950



Flora and Sanatoriums  
1950



BELGIUM

SEMI-POSTAL STAMPS

European Athletic Games  
1950



# BELGIUM

## SEMI-POSTAL STAMPS

### UNESCO Reconstruction Fund 1951



### Erection of National Monument 1951



### Queen Elisabeth Medical Foundation 1951



# BELGIUM

## SEMI-POSTAL STAMPS

Cross, Sun Rays and Dragon; Castles  
1951



Portraits  
1952

Beaulieu Castle  
1952



# BELGIUM

## SEMI-POSTAL STAMPS

25th Anniversary of Cardinalate of J. E. Van Roey  
1952



Emile Verhaeren, Hendrik Conscience  
Issued with Labels  
1952





# BELGIUM

## SEMI-POSTAL STAMPS

Types of 1951, Arms of Malmedy and Other Designs  
1952



Princess Josephine-Charlotte  
1953



# BELGIUM

## SEMI-POSTAL STAMPS

Walthère Dewe  
1953

European Bureau of Childhood and Youth  
1953



Tourism and Cultural Works  
1953



20th Anniversary of the Death of King Albert I  
1954



# BELGIUM

## SEMI-POSTAL STAMPS

Type of 1951 and Portraits

1953



Monument to Political Prisoners

1954



Child's Head, "The Blind Man and the Paralytic"

1954



# BELGIUM

## SEMI-POSTAL STAMPS

Friends of the Beguinage of Bruges  
1954



Belgian Scientists  
1955



# BELGIUM

## SEMI-POSTAL STAMPS

"The Joys of Spring" and Portraits  
1955



200th Anniversary of the Birth of Mozart  
1956



Queen Elisabeth's 80th Birthday  
1956



# BELGIUM

## SEMI-POSTAL STAMPS

Ship with Cross, Infant on Scales, and Other Designs  
1956



Portraits  
1957



# BELGIUM

## SEMI-POSTAL STAMPS

Belgian Antarctic Expedition  
1957



Adolphe Max  
1957



# BELGIUM

## SEMI-POSTAL STAMPS

General Patton  
1957



Legends  
1957





# BELGIUM

## SEMI-POSTAL STAMPS

Brussels World's Fair  
1958



Paintings  
1958



# BELGIUM

## SEMI-POSTAL STAMPS

Legends  
1958



"Europe of the Heart"  
1959



# BELGIUM

## SEMI-POSTAL STAMPS

Red Cross  
1959



Whale and Other Subjects  
1959



# BELGIUM

## SEMI-POSTAL STAMPS

Royal Library, Brussels  
1959



World Refugee Year  
1960



BELGIUM  
SEMI-POSTAL STAMPS  
World Refugee Year  
1960



# BELGIUM

## SEMI-POSTAL STAMPS

Parachutists  
1960

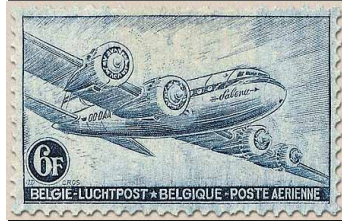


UNICEF  
1960



BELGIUM  
AIR POST STAMPS

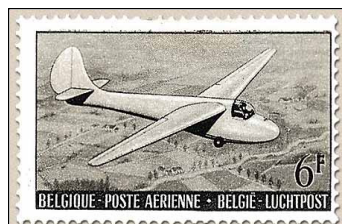
DC-4 Skymaster  
1946



Centenary of Belgian Postage Stamps  
1949



50th Anniversary of the Aereo Club of Belgium  
1951

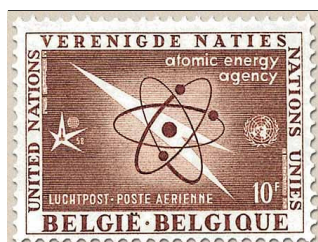
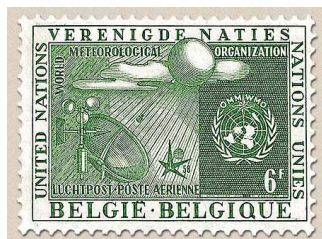


# BELGIUM

## AIR POST STAMPS

United Nations Issue

1958





# BELGIUM

## AIR POST SEMI-POSTAL STAMPS

American Memorial at Bastogne  
1946



Flight Allegory  
1946



Semi-Postal Stamps Surcharged  
1947



# BELGIUM

## AIR POST SEMI-POSTAL STAMPS

Semi-Postal Stamps Surcharged

1947



Helicopter

1950



# BELGIUM

## PARCEL POST AND RAILWAY STAMPS

Types of 1923-40

1941



# BELGIUM

## PARCEL POST AND RAILWAY STAMPS

Types of 1923-40

1941



Railroad Scenes

1942



# BELGIUM

## PARCEL POST AND RAILWAY STAMPS

### Railroad Scenes

1945-46



# BELGIUM

## PARCEL POST AND RAILWAY STAMPS

Railroad Scenes  
1945-46



# BELGIUM

## PARCEL POST AND RAILWAY STAMPS

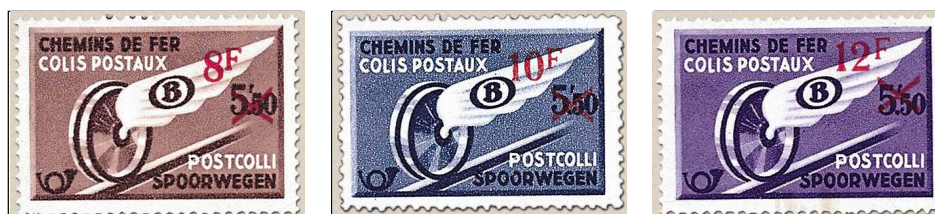
Mercury  
Inscribed "Belgie-Belgique"  
1945-46



Inscribed "Belgique-Belgie"



Winged Wheel Type of 1938  
Carmine Surcharge  
1946



Railway Crossing  
1947



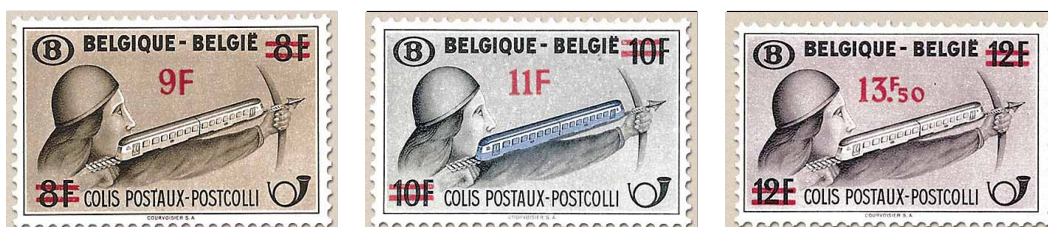
# BELGIUM

## PARCEL POST AND RAILWAY STAMPS

Crossbowman with Train  
1947



Surcharged  
1948



Delivery of Parcel  
1948





# BELGIUM

## PARCEL POST AND RAILWAY STAMPS

### Locomotives

1949



# BELGIUM

## PARCEL POST AND RAILWAY STAMPS

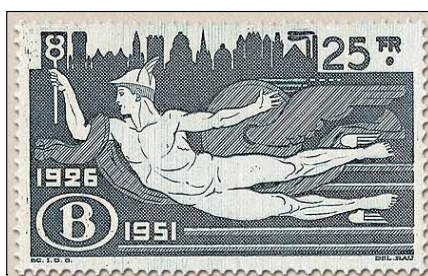
Electric Train  
1949



Mailing Parcel Post, Sorting, Loading  
1950-52



Mercury and Winged Wheel  
1951



Electric Train  
1952



# BELGIUM

## PARCEL POST AND RAILWAY STAMPS

1950-52 Issues Surcharged

1953



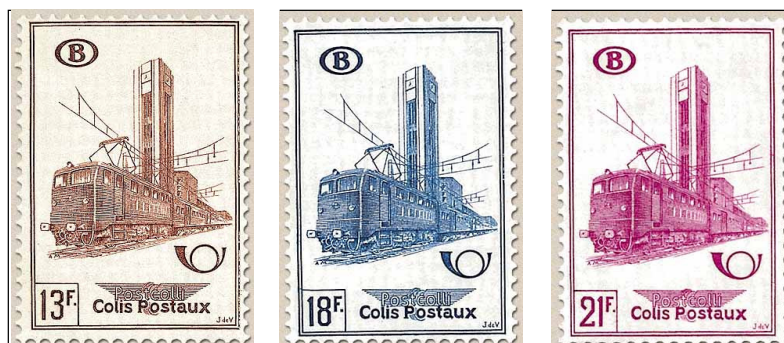
Electric Train

1953



Electric Train

1954



Surcharged

1956



# BELGIUM

## PARCEL POST AND RAILWAY STAMPS

### Railway Stations 1953-57



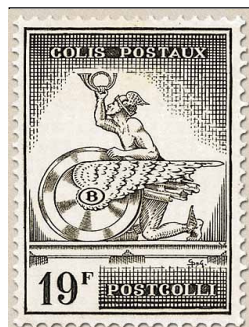
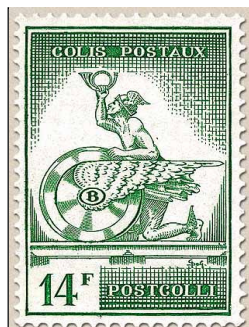
# BELGIUM

## PARCEL POST AND RAILWAY STAMPS

### Railway Stations 1953-57



### Mercury and Winged Wheel 1957



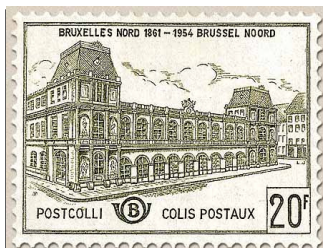
### Surcharged 1959



# BELGIUM

## PARCEL POST AND RAILWAY STAMPS

Old North Station  
1959



Diesel and Electric Locomotives and Association Emblem  
1960



# BELGIUM

## OFFICIAL STAMPS

Regular Issues of 1935-41 Overprinted in Red or Dark Blue  
1941-44



Surcharged  
1942



Lion and "B"  
1946-48



# BELGIUM

## OFFICIAL STAMPS

King Baudouin and "B" Emblem

1954-70





# BELGIUM

## OFFICIAL STAMPS

Types of Regular Issues with "B" Emblem Added  
1948



Lion and "B" Emblem  
1953-66



# BELGIUM

## POSTAGE DUE STAMPS

Numerals

Inscribed "Te Betalen" at Top

1945



Inscribed "A Payer" at Top



Numerals

1949-53

